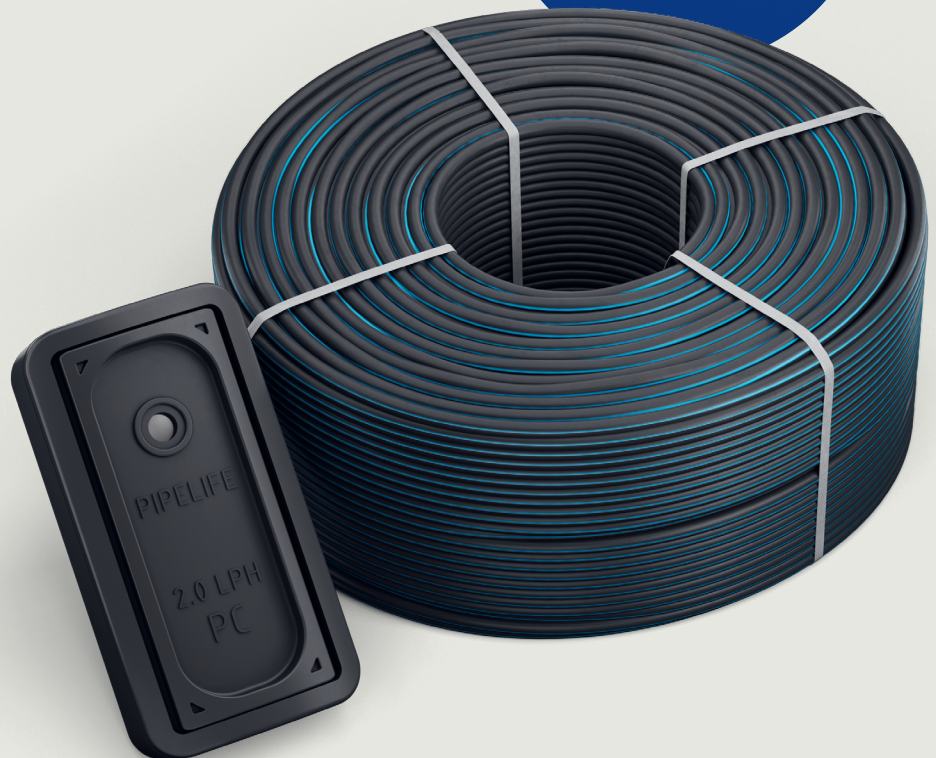




The only PC dripper  
with 2 separate filters

## Heavy wall drip pipes with flat PC dripper

- **Advanced clogging resistance** thanks to double filtration, turbulent flow and a self-flushing mechanism
- **High-precision flow rate** across a wide pressure range: **0.4 – 4.0 bar**
- **Extra-long laterals** due to pressure compensation



## Technical details

**Dripper type:** Integral, flat, pressure-compensated, anti-siphon

**Dripper flow rates (l/h):** 0.8 | 1.0 | 1.3 | 1.5 | 2.0

**Dripper distance (cm):** 15 – 100

**Line diameters (mm):** 16 | 20

**Wall thickness (mm):** 0.90 | 1.00 | 1.1

**Filtration requirements (microns/mesh):** 100/150

**Operating pressure (bar):** 0.4 – 4.0

## Product features

**INRAE-confirmed flow rate precision and uniformity**

**Stripe markings for easy installation**

**High UV and fertilizer resistance**

**Large outlet pool prevents soil ingestion**

## Usage

**Seasons:** multi-season

**Topography:** flat and sloped

**Soil types:** all

**Placement:** surface and sub-surface

## Application areas

- Greenhouses
- Row crops
- Fruit orchards
- Vineyards
- Olive groves

### Ø16 maximum lateral length (meters) at 2.0 bar, flat terrain

Flow rate (l/h)	Spacing (meters)								
	0.2	0.3	0.4	0.5	0.6	0.7	0.8	0.9	1.0
0.8	200	269	325	384	436	487	548	579	610
1.0	123	185	236	271	314	361	382	415	467
1.3	105	141	180	223	259	291	323	351	388
1.5	92	128	168	201	230	254	279	310	344
2.0	82	116	147	177	203	229	254	277	299

### Ø20 maximum lateral length (meters) at 2.0 bar, flat terrain

Flow rate (l/h)	Spacing (meters)								
	0.2	0.3	0.4	0.5	0.6	0.7	0.8	0.9	1.0
0.8	273	351	443	523	575	633	668	735	801
1.0	247	319	403	475	523	575	607	668	729
1.3	201	262	324	366	413	456	511	555	589
1.5	188	248	300	347	391	433	472	509	545
2.0	165	209	263	290	327	364	416	438	461



**Find the system that suits your crops best from our wide range of drip irrigation technology**

**wienerberger TR**

No: 403-1,1-, Ankara Ave, Yenışehir, Pendik, İstanbul, TÜRKİYE  
T: +90 (0216) 378 36 20 F: +90 (216) 378 36 27

**Niğde Factory**

Organized Industrial Zone, 3rd Street No: 8, Fertek, Niğde 51200, TÜRKİYE  
T: +90 (388) 502 00 15